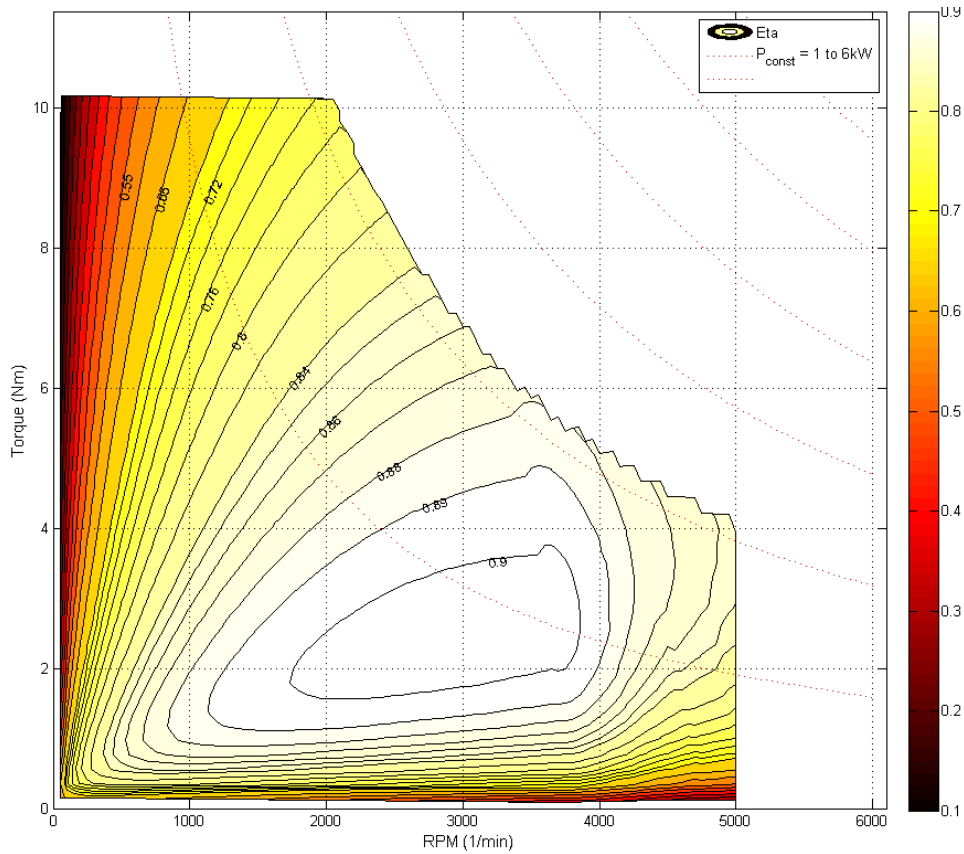


► Technical data

Torque vs. Speed and Efficiency Map



Motor Reference Code	5924R1027	
Max Torque	10.5	Nm
Max speed	5000	rpm

► Electrical and Mechanical Interface

Integrated signal connector	Deutsch DT04-6P, Mating connector DT06-6S
Signal connector pinout	1=CAN Shield, 2=CAN low, 3=Wake-up, 4=CAN high, 5=Enable GND, 6=Enable signal
Screw terminals for power supply	2x M6 bolts, available length of thread 10 mm
Communication	CAN 2.0, Baudrate 250 kbit/s, 500 kbit/s, 1 Mbit/s
Over and under voltage protection	Integrated, up to 36 V
Reverse polarity protection	Integrated, up to -32 V
Maximum battery current	120 A
Quiescent current (Enable "Low")	1 < mA
Output shaft	φ12h8 with groove for feather key DIN 6885 – A 4x4x10

► Operating conditions

Operating Temp. Range	-40°C / +85°C
Vibration level	5g RMS, further validations upon request
Protection class	Up to IP 6K9K after integration to the customer's housing
ROHS (Lead Free)	Compliant